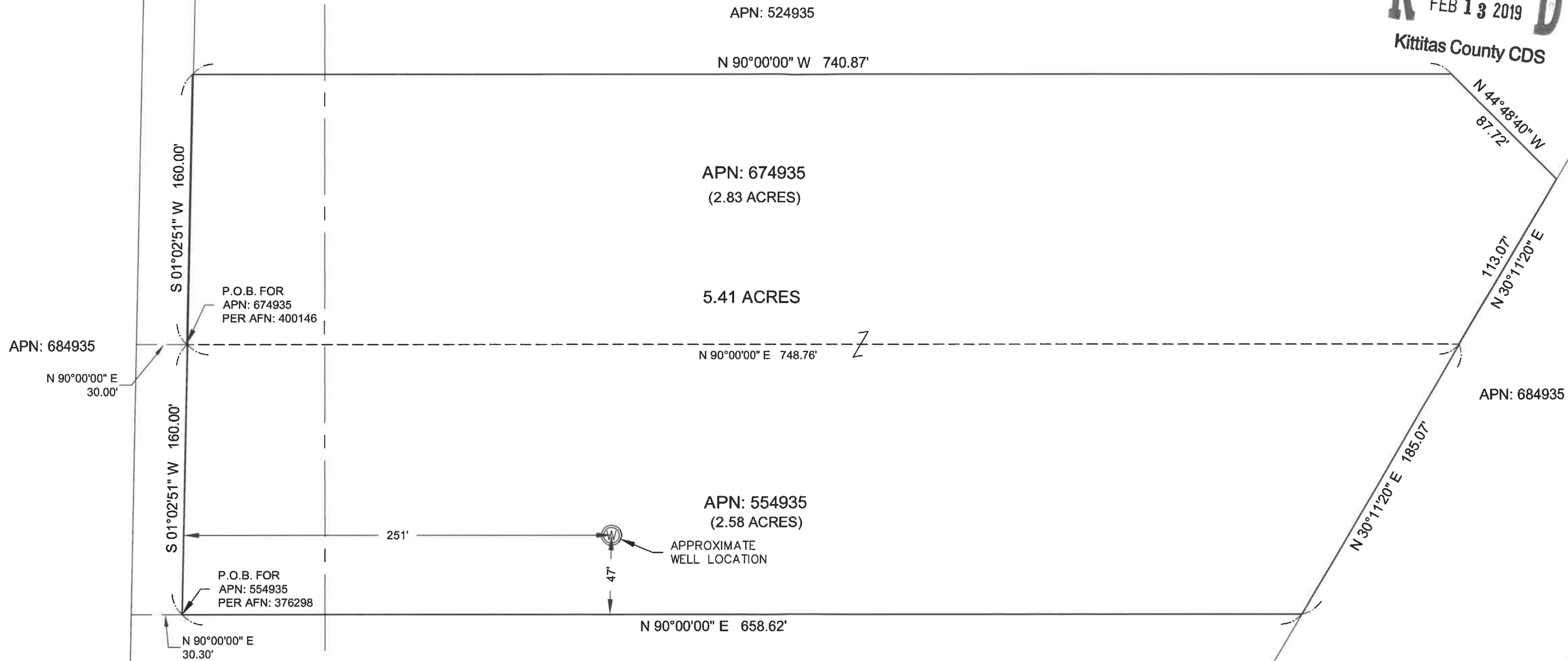


RECEIVED
 FEB 13 2019
 Kittitas County CDS



LEGEND

- AFN AUDITOR'S FILE NUMBER
- APN ASSESSOR'S PARCEL NUMBER
- P.O.B. POINT OF BEGINNING

THIS MAP IS INTENDED TO FACILITATE AN APPLICATION FOR A PARCEL COMBINATION. IT IS BASED UPON THE DEEDS OF RECORD. THIS IS NOT A SURVEY.

PARCEL COMBINATION EXHIBIT	PREPARED FOR SAM MAYBO	Encompass ENGINEERING & SURVEYING <small>Western Washington Division 165 NE Juniper Street, Suite 201 • Issaquah, WA 98027 • Phone: (425) 392-0250 • Fax: (425) 391-3055 Eastern Washington Division 407 Stillwater Blvd. • Cle Elum, WA 98922 • Phone: (509) 674-7433 • Fax: (509) 674-7419</small>	REVISIONS	JOB NO. 19003	1 SHEET
				DATE 02/2019	
				SCALE 1"=60'	